

ADMIRALTY

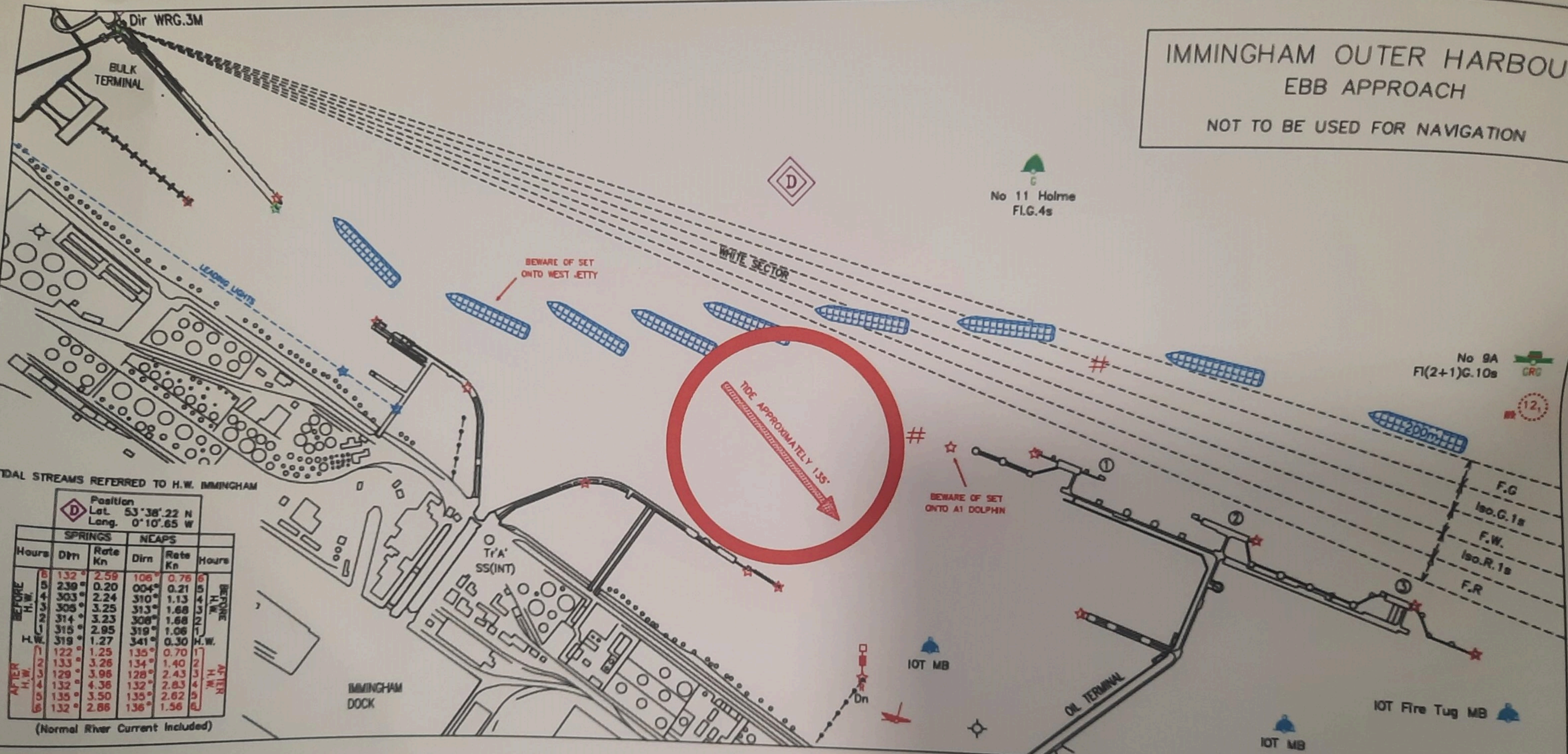


PRINT ON DEMAND

River Humber
Immingham to Humber
Bridge and the Rivers...

3497

IMMINGHAM OUTER HARBOUR
EBB APPROACH
NOT TO BE USED FOR NAVIGATION



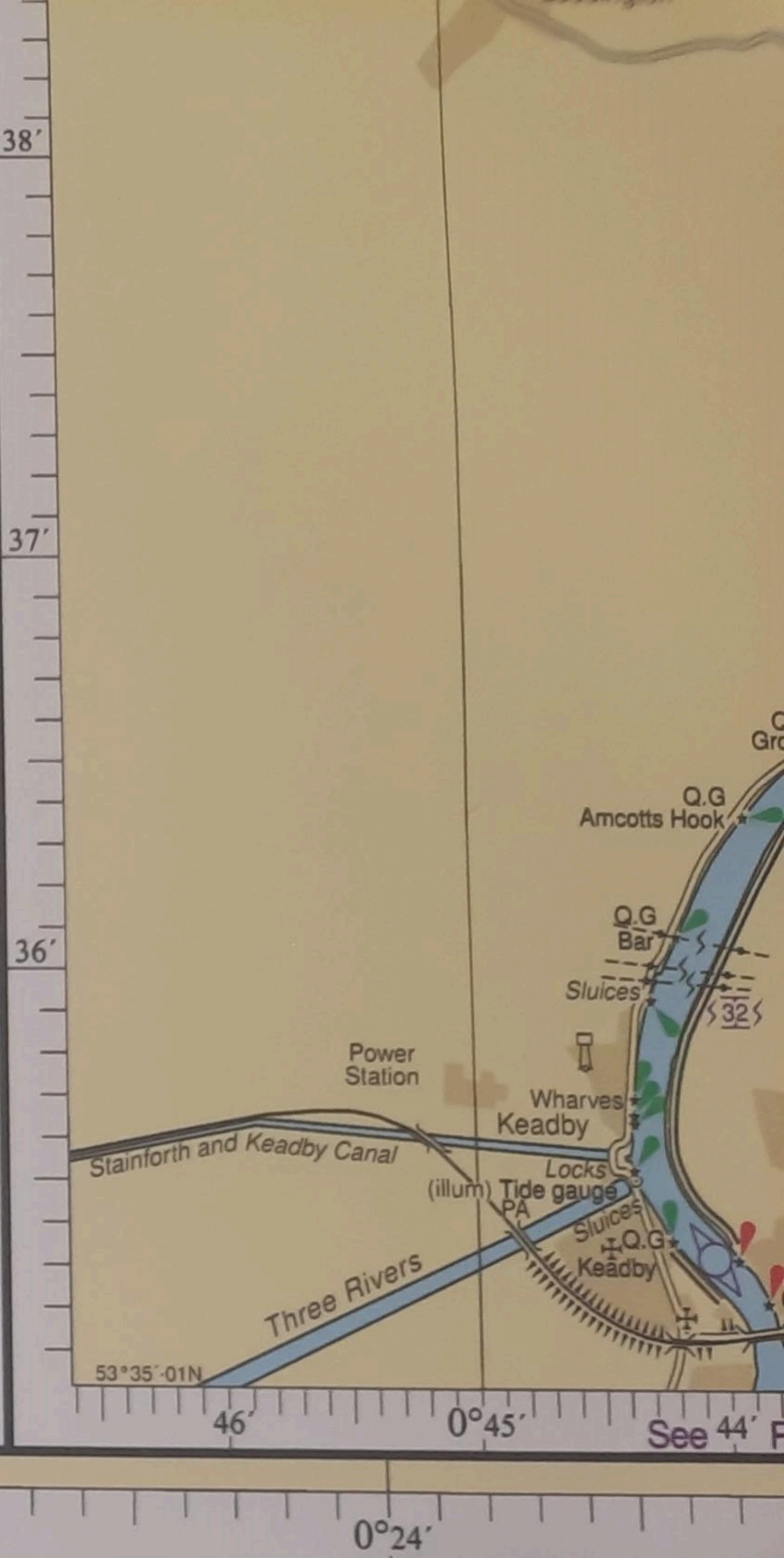
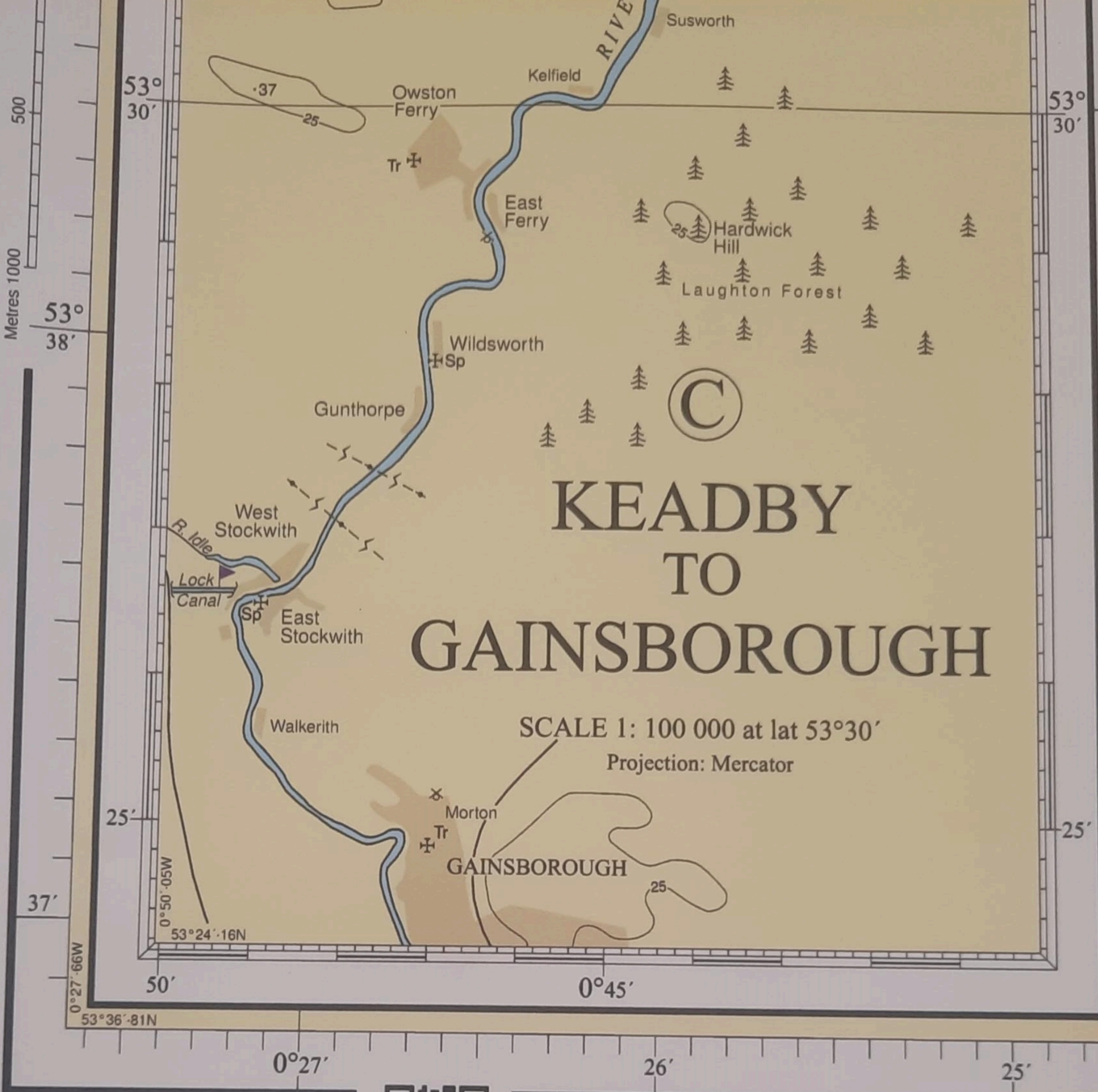
TIDAL STREAMS REFERRED TO H.W. IMMINGHAM

Position
Lat. 53°38'.22 N
Long. 0°10'.65 W

Hours	SPRINGS		NEAPS		Hours
	Dirn	Rate Kn	Dirn	Rate Kn	
BEFORE H.W.	132°	2.59	108°	0.76	6
1	239°	0.20	004°	0.21	5
2	303°	2.24	310°	1.13	4
3	308°	3.25	313°	1.68	3
4	314°	3.23	308°	1.68	2
5	315°	2.95	319°	1.06	1
H.W.	319°	1.27	341°	0.30	H.W.
1	122°	1.25	135°	0.70	1
2	133°	3.26	134°	1.40	2
3	129°	3.96	128°	2.43	3
4	132°	4.36	132°	2.83	4
5	135°	3.50	135°	2.62	5
AFTER H.W.	132°	2.86	136°	1.56	6

(Normal River Current Included)

Printed by 9030 (P611) - Plymouth Sea Chest Limited on 29 Aug 2023 09:09 L



Customer Information
 Edition Number: 54
 Edition Date: 31st Aug 2023



ADMIRALTY Notices to Mariners updated to



DEPTHS: HUMBER SEA TERMINAL
Depths in the approaches to and at the Humber Sea Terminal berths are dredged. The Dock Master should be consulted for details.

WHITEBOOTH ROAD

HUMBER INTERNATIONAL TERMINAL

IMMINGHAM

Feet 1000

5000

10 000

15 000 Feet

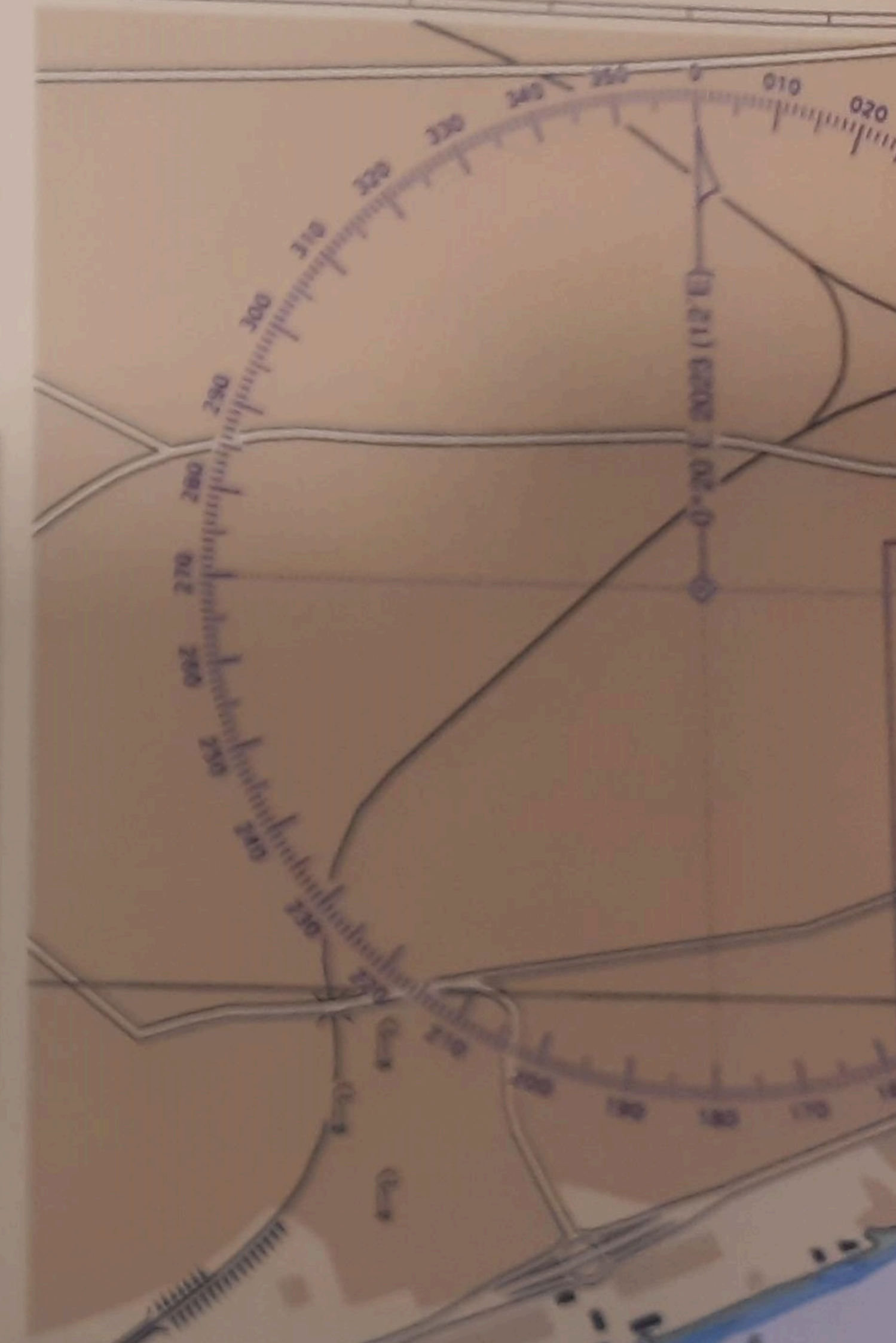
0°27' 26' 25' 0°24' 23' 22'

Tidal Streams referred to HW at IMMINGHAM (Normal river current included)

Hours	Geographical Position	A 53°37'12 N 0°06'70 W		B 53°38'22 N 0°10'65 W		C 53°41'35 N 0°13'83 W		D 53°44'25 N 0°17'20 W		E 53°43'85 N 0°20'92 W	
		Directions of streams (degrees)	Rates at spring tides (knots)	Directions of streams (degrees)	Rates at spring tides (knots)	Directions of streams (degrees)	Rates at spring tides (knots)	Directions of streams (degrees)	Rates at spring tides (knots)	Directions of streams (degrees)	Rates at spring tides (knots)
-6		104	2.1 1.3	132	2.6 0.8	163	3.3 1.0	108	3.8 2.3	063	3.3 1.5
-5		090	0.1 0.2	239	0.2 0.2	175	1.1 0.2	097	2.6 0.6	064	2.2 0.1
-4		290	2.1 0.9	303	2.2 1.1	355	2.3 1.2	283	2.2 1.7	241	2.8 2.0
-3		303	2.9 1.3	305	3.3 1.7	340	3.0 1.5	286	4.1 3.0	243	5.0 3.2
-2		297	2.9 1.3	314	3.2 1.7	334	3.1 1.8	291	2.6 2.8	245	4.5 3.8
-1		294	2.6 1.2	315	3.0 1.1	337	3.3 1.3	286	2.4 1.9	240	3.7 2.7
0		300	1.5 0.6	319	1.3 0.3	324	1.4 0.5	266	1.0 1.1	239	1.8 1.5
+1		107	0.6 0.5	122	1.3 0.7	129	1.1 0.6	112	1.0 0.4	103	0.7 0.1
+2		117	2.5 1.5	133	3.3 1.4	160	2.5 1.5	098	2.7 1.4	068	3.1 1.2
+3		122	2.4 1.6	128	4.0 2.4	158	3.1 2.1	101	3.2 2.7	067	3.3 2.3
+4		114	3.4 1.9	132	4.4 2.8	157	3.9 2.4	103	3.9 2.8	066	3.4 2.3
+5		105	3.0 1.7	126	3.5 2.6	155	4.3 2.5	106	4.4 3.0	063	3.1 2.6
+6		105	2.4 1.4	132	2.9 1.6	164	3.8 1.9	108	4.4 3.0	063	3.5 1.9

Nautical Miles 1

Feet 1000



Tidal Levels referred to Datum of Soundings

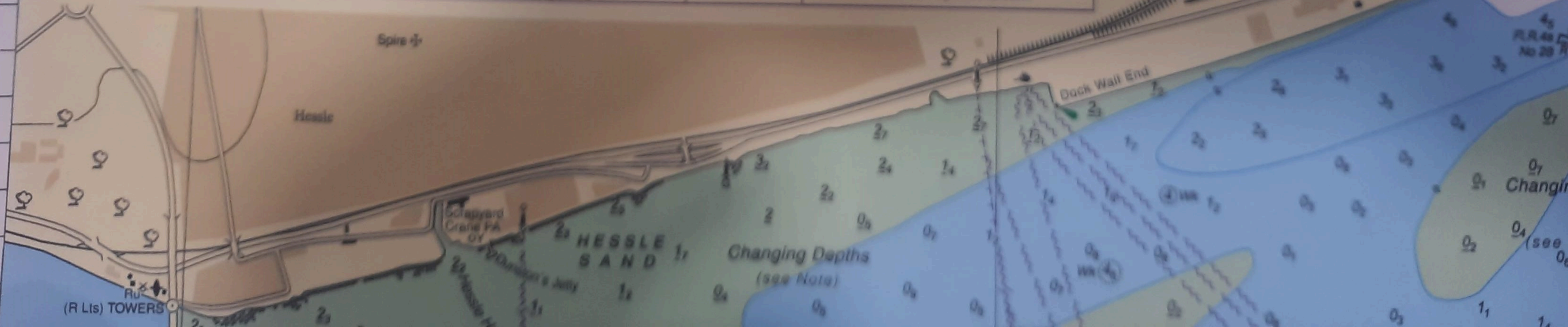
Place	Lat N	Long W	Heights in metres above datum				Datum and Remarks
			MHWS	MHWN	MLWN	MLWS	
Immingham	53°38'	0°11'	7.3	5.8	2.6	0.9	3.90m below Ordnance Datum (Newlyn)
Humber Sea Terminal	53 40	0 14	7.2	5.7	2.6	1.1	
Hull (King George Dock)	53 44	0 16	7.6	6.0	2.5	0.7	3.90m below Ordnance Datum (Newlyn)
Hull (Alexandra Dock)	53 44	0 18	7.6	6.0	2.5	0.7	3.90m below Ordnance Datum (Newlyn)
Hull (Albert Dock)	53 44	0 21	7.6	5.9	2.5	0.7	3.90m below Ordnance Datum (Newlyn)
Humber Bridge	53 43	0 27	7.2	5.4	1.9	0.3	3.30m below Ordnance Datum (Newlyn)
Brough	53 43	0 34	6.1	4.4	1.5	0.2	2.50m below Ordnance Datum (Newlyn)
Blacktoft	53 42	0 43	5.7	4.0	0.4	-0.2	1.50m below Ordnance Datum (Newlyn)
Goole	53 42	0 52	5.7	3.7	0.7	0.3	1.40m below Ordnance Datum (Newlyn)
Burton Stather	53 39	0 42	5.3	3.1	0.4	-0.2	1.10m below Ordnance Datum (Newlyn) Dries out except for river water
Flixborough Wharf	53 37	0 42	5.2	3.0	0.4	0.0	0.90m below Ordnance Datum (Newlyn) Dries out except for river water
Keadby	53 36	0 44	4.5	2.5	0.3	0.0	0.40m below Ordnance Datum (Newlyn) Dries out except for river water
Owston Ferry	53 29	0 46	3.8	1.9	-	-	0.50m ABOVE Ordnance Datum (Newlyn) Dries out except for river water

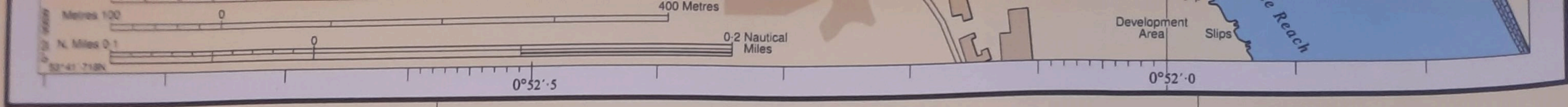
HARBOUR/MARINA	VHF RADIO CHANNELS	AREA DIALLING CODE	TELEPHONE NUMBER	WEB ADDRESS
Hull Marina	80	+44(0) 1482	609960	www.aquavista.com
South Ferriby Marina	80	+44(0) 1652	635620	www.thesouthferribymarina.com

10 000 Metres

53° 44'

43'





INTERNATIONAL
CHART SERIES



ENGLAND – EAST COAST

RIVER HUMBER

IMMINGHAM TO HUMBER BRIDGE

AND THE RIVERS OUSE AND TRENT

DEPTHS IN METRES

SCALE 1: 25 000

Depths are in metres and are reduced to Chart Datum, which is approximately the level of Lowest Astronomical Tide.

Heights are in metres. Underlined figures are drying heights above Chart Datum. Vertical clearance heights are above Highest Astronomical Tide. All other heights are above Mean High Water Springs.

Positions are referred to the WGS84 compatible datum, European Terrestrial Reference System 1989 Datum.

Navigational marks: IALA Maritime Buoyage System – Region A (Red to port).

Projection: Transverse Mercator.

Sources: From the latest hydrographic information supplied by ABP Humber. The topography is derived chiefly from Ordnance Survey maps and aerial photography.

OVERHEAD CABLES

Overhead cables may conduct high voltages; contact with or proximity to these poses extreme danger. Sufficient clearance must be allowed.

LIGHTS

Light stars without legends represent two fixed lights displayed vertically.

AUTOMATIC IDENTIFICATION SYSTEMS

AIS transmitters on aids to navigation are not shown on this chart. V-AIS will be shown. For details, see ADMIRALTY List of Radio Signals.

SUBMARINE CABLES AND PIPELINES

Mariners should not anchor, trawl or engage in seabed operations in the vicinity of submarine cables and pipelines. Submarine cables support national infrastructure; damage to them may affect critical services and can result in serious consequences, as well as creating a potential hazard to mariners. Wilful or neglectful damage to a cable may result in legal action. Pipelines are not always buried and their presence may significantly reduce the charted depth. They may also span seabed undulations and cause fishing gear to become irrecoverably snagged, putting a vessel in severe danger.

VESSEL REPORTING

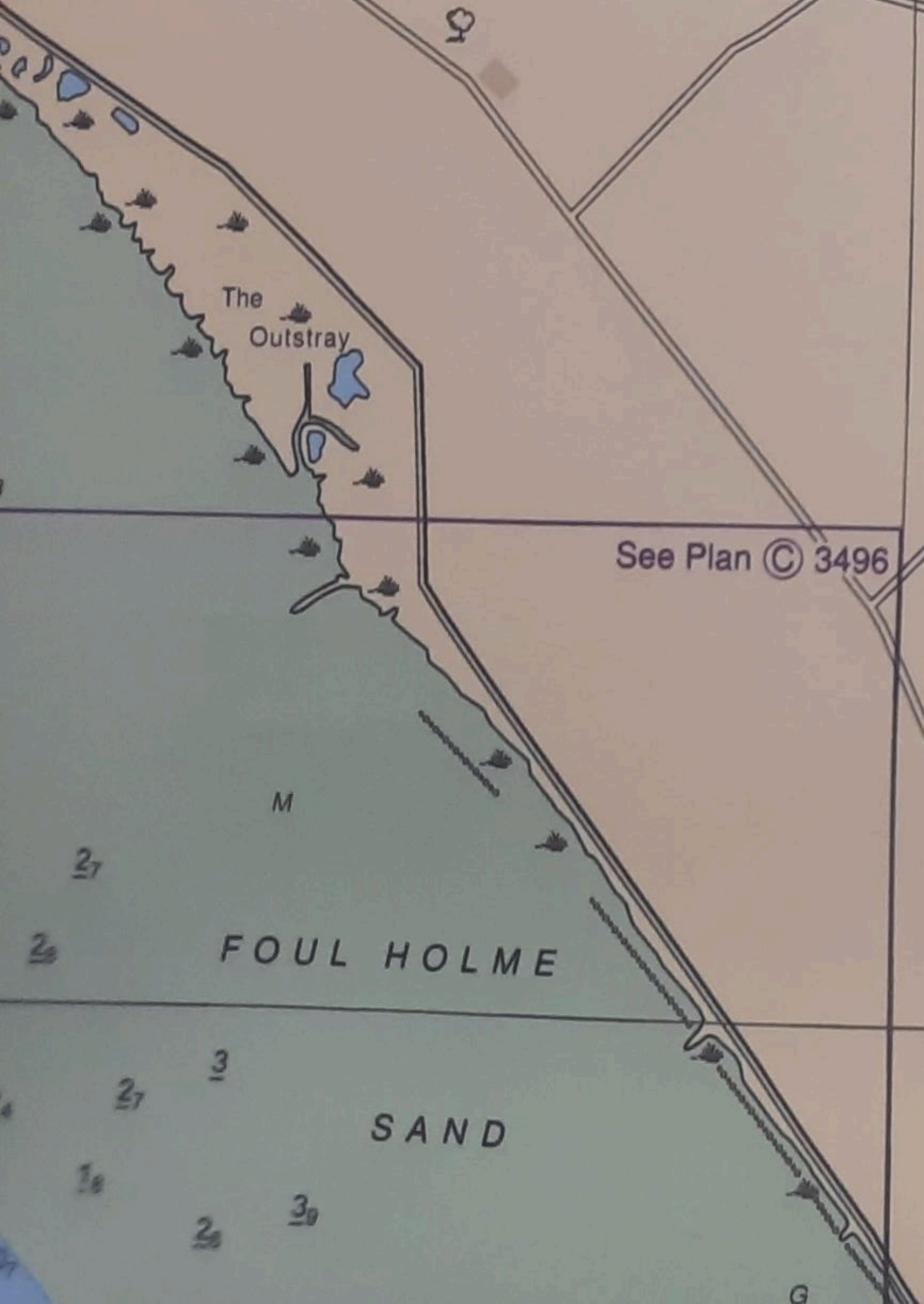
For details of the Humber Vessel Traffic Service, see ADMIRALTY List of Radio Signals.

CHANGING DEPTHS

The channels and depths shown on this chart are subject to frequent change. The buoyage and other aids to navigation are adjusted accordingly. The most frequent changes are within Foul Holme Channel (53°39'·65N 0°11'·50W approx.) and in the channel south of Hessle Sand (53°42'·90N 0°24'·60W approx.). For the latest available depth information, including alongside berths in the river and in the entrances to Immingham and Hull Docks, the Harbour Master, Humber, should be consulted.

SUNK DREDGED CHANNEL – DEPTHS (53°37'·05N 0°04'·65W)

Sunk channel is dredged continuously. The latest available depths will be announced by Humber VTS in their regular river broadcasts. Mariners requiring immediate information about depths in the channel should contact Humber VTS.



See Plan © 3496

